



Maximize storage capacity  
and enhance productivity

Pallet Shuttle High-Density Storage System

Engineered and manufactured by:

**Interlake**  
 **MECALUX**





Pallet Shuttle is a high-density semi-automated storage system that uses a motorized shuttle to carry pallets inside storage lanes. The carts move along rails inside the lanes, following orders, of one or various movements, that are sent by the operator using a Wi-Fi tablet.

## Operation



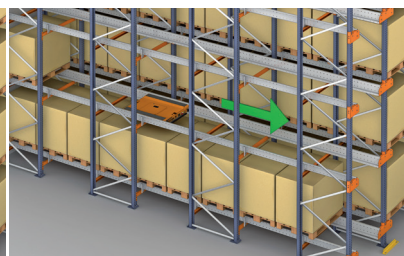
The forklift places the motorized Pallet Shuttle in the lane where work needs to be carried out.



Forklifts are used to position pallets one by one in the level entrance, resting them on the load-bearing beams. The forklift never enters the rack.



The shuttle lifts the pallet slightly, and moves it horizontally until it reaches the deepest available location, where it deposits the pallet.



The shuttle returns to the channel entrance in order to repeat the movement with the next pallet. This sequence is repeated as many times as necessary until the corresponding lane is full.

When unloading pallets, the shuttle performs the same operation as described, but in reverse.





## Pallet Shuttle Features

Interlake Mecalux's Pallet Shuttle system incorporates the latest technological innovations, offering optimum performance.

### High travel speed:

300ft/min when empty and 150ft/min carrying a load.

**Lithium batteries** that provide battery life of up to 12 hours working at full capacity.

**Sensors** that detect and measure different types of pallets.

**Battery compartment with quick connections** that eliminate the need for cables and speed up battery changes so that the work cycle is not interrupted.

The **shuttle platform** is designed to carry pallets that are bowed, or with deflection of up to a maximum of 1 inch.

**Compatible with Easy WMS**, Interlake Mecalux's warehouse management software, which helps eliminate errors.

The Wi-Fi control tablet has a very **intuitive user interface, which is easy to use.**

Includes advanced **safety features**, such as:

- **Locking system** that increases the contact between the Pallet Shuttle and the forks of the lift truck.

- **Positioning camera** to help the operator center the shuttle between the rails (optional).

- **A safety scanner on either side of the Pallet Shuttle** to control rail access more safely while the shuttle is in operation (optional).

Load capacity of up to **3,300lbs**

Lifting time of **2Seconds**

Transport speed of **300ft/min** without load

Lithium **batteries** with great battery life

Adaptable to temperatures from **-22 to 112 °F**



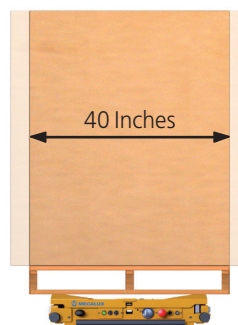
Up to **18** carts controlled with the same device

### Adaptable

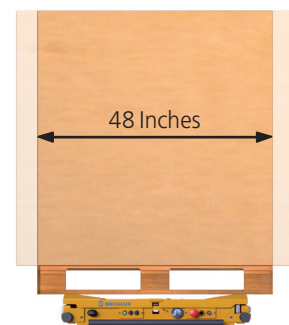
for pallets of different sizes

A single shuttle can work with pallets of different types

Multiple **models** available for your pallet requirements



48 x 40 - GMA Pallet



40 x 48 Pallet





Locking system to ensure the shuttle is held in place on the forklift



Fast access to the battery compartment



Intuitive user interface



View using the positioning camera



Independent movement along the tracks



Pilot lights showing operating mode



## Main Features

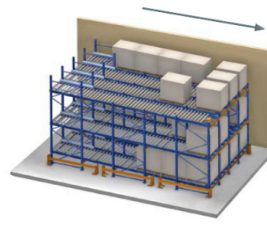
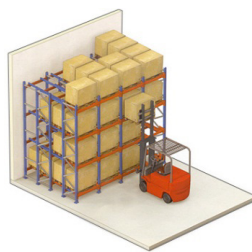
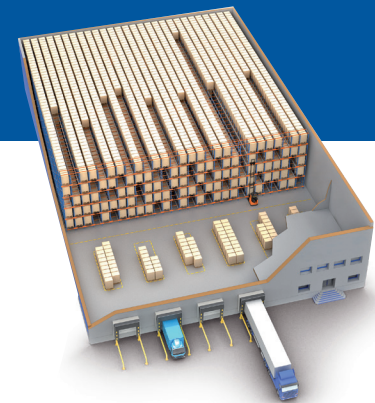
1	<b>Pallet Selector:</b>	Select the type of pallet you want to handle
2	<b>LIFO/FIFO configuration:</b>	Select the desired load management strategy
3	<b>Change P&amp;D station:</b>	Select which side of the structure you want to work on (in FIFO mode)
4	<b>Locking system:</b>	Activate the additional locking system that increases contact between the Pallet Shuttle and the lifting forks of the truck
5	<b>Grouping:</b>	Group pallets at the beginning (LIFO) or end (FIFO) of the channel
6	<b>Continuous loading/unloading:</b>	Load/unload a channel without stopping
7	<b>Partial unload:</b>	Select the number of pallets to extract
8	<b>Location signal:</b>	Activate the audible and light signals to identify the location of the selected shuttle
9	<b>Inventory:</b>	Count the number of pallets stored in the channel
10	<b>User management:</b>	Password protected user settings
11	<b>Operating mode selector:</b>	Automatic or manual (for maintenance tasks)
12	<b>Shuttle indicator:</b>	Shows the number of shuttles in operation and their status

See the Pallet Shuttle in action and find success stories at [www.interlakemecalux.com/ps](http://www.interlakemecalux.com/ps)





## High-Density Systems Comparison



	Drive-In/Through	Push Back	Pallet Flow	Pallet Shuttle
<b>APPLICATIONS</b>	LIFO / FIFO	LIFO	FIFO	LIFO / FIFO
<b>PALLETS IN DEPTH</b>	Up to 8	Up to 6	Up to 20	Up to 40
<b>SELECTIVITY-SKUS</b>	SKUs by bays	SKUs by lanes	SKUs by lanes	SKUs by lanes
<b>SAFETY</b>	Forklift enters	Forklift not entering	Forklift not entering	Forklift not entering
<b>SAFETY OF LOAD</b>	No product contact	No product contact	Product contact	No product contact
<b>COST PER PALLET</b>	\$	\$\$	\$\$\$	\$\$



# Do you need to increase productivity in your warehouse while reducing operating costs at the same time?

## The Pallet Shuttle system provides the ideal solution for:

- Companies with a high volume of pallets per SKU and high loading and unloading activity.
- Warehouses with a high density of products.
- Cold storage.
- Buffers for temporary storage or picked orders.
- Seasonal product warehouses, or warehouses whose inflow and outflow depend on the season.
- In general, any warehouse that already uses a high-density system and where access to a greater number of references, storage of a greater number of pallets in depth, or an increase in the number of incoming and outgoing movements is required.



Ask for more information or an obligation-free quote at [www.interlakemecalux.com](http://www.interlakemecalux.com) or call 1.800.444.4532



email: [info@interlakemecalux.com](mailto:info@interlakemecalux.com) | [www.interlakemecalux.com](http://www.interlakemecalux.com) | phone: 1.800.444.4532

### Sales Offices

#### CHICAGO

1600 N. 25th Avenue  
Melrose Park, IL 60160

#### DALLAS

2301 N Steammons Freeway  
Suite #110  
Farmers Branch, TX 75234

#### SAN DIEGO

8607 Ave de la Fuente  
San Diego, CA 92154

### Production Plants

#### CHICAGO

1600 N. 25th Avenue  
Melrose Park, IL 60160

#### MATAMOROS

Las Rusias 2700,  
Industrial del Norte  
Matamoros Tamaulipas,  
Matamoros 87316

#### PONTIAC

701 Interlake Drive  
Pontiac, IL 61764

#### SUMTER

1925 Corporate Way  
Sumter, SC 29154

#### TIJUANA

Bldv. Bellas Artes 9001  
Ciudad Industrial Nueva Tijuana  
Tijuana, B.C., Tijuana 22444

### Offices Worldwide

Argentina, Belgium, Brazil, Canada, Chile, Czech Republic, France, Germany, Holland, Italy, Mexico, Peru, Poland, Portugal, Slovakia, Spain, Turkey, United Kingdom, and Uruguay

